

POLICE ASSISTED & RECOVERY INITIATIVE (PAARI) DEFLECTION OVERVIEW

AN INTRODUCTION TO PAARI & DEFLECTION PROGRAMS



POLICE & PUBLIC HEALTH PARTNERSHIPS

Police and public safety have had a front row seat to the opioid and addiction crisis

Community Policing 101 - smart policing is implementing new ways to increase the safety and health of the community. Deflection and diversion into recovery resources can support those goals.

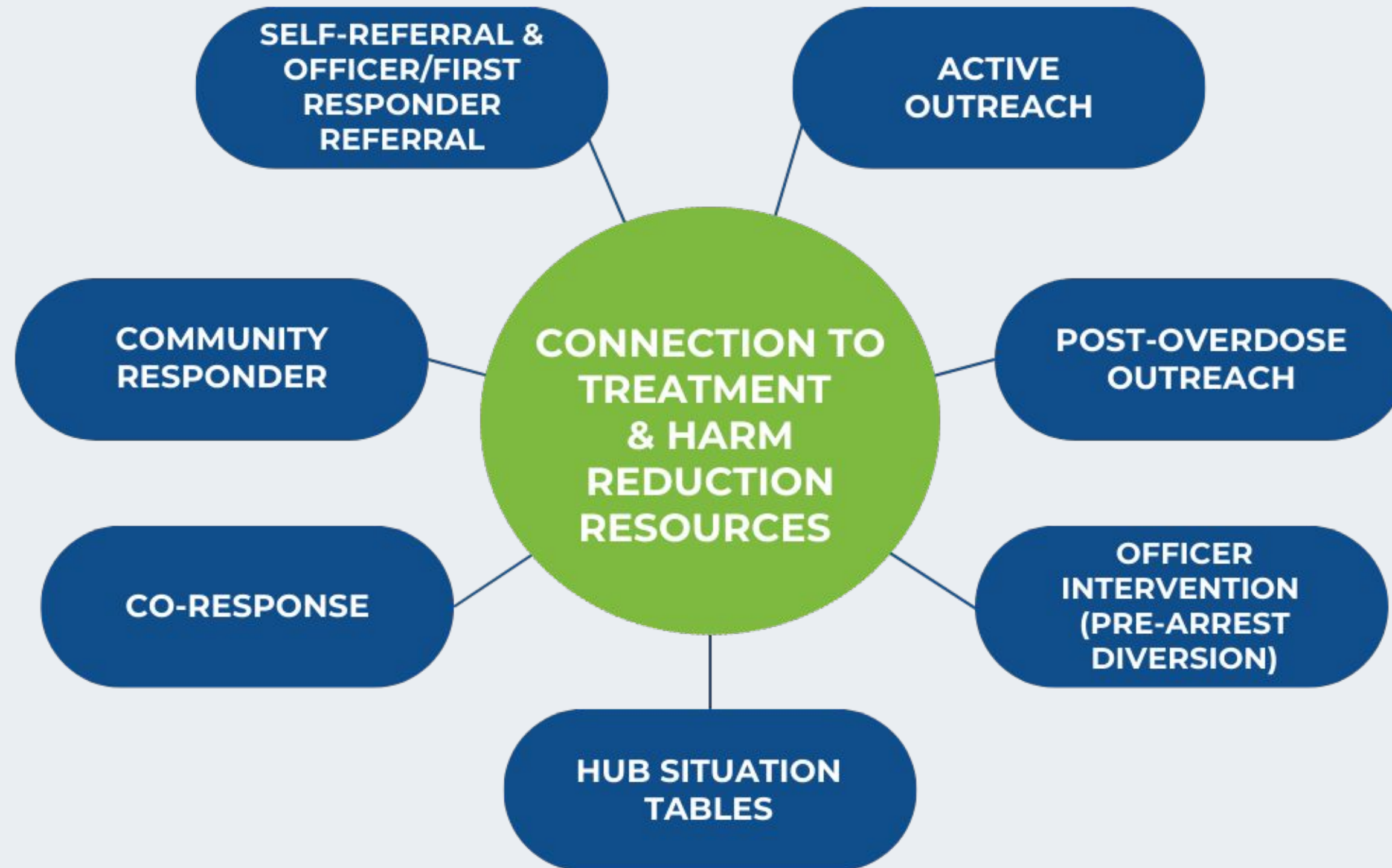
Police and Public Health partnerships are vital to developing and implementing programs

Public health emergencies are still being responded to by public safety

- Estimated 20% police calls for service involve a mental health or substance use crisis¹



DEFLECTION MODELS



Publication on Post-Overdose Programs¹

Community-level evaluation of Massachusetts agencies that adopted a post-overdose outreach program found a 6% reduction in fatal overdose rate *annually* for each year of the program relative to communities with non-adopting agencies.



Cost Effectiveness & Impact

- According to several conservative estimates, every dollar invested in addiction treatment programs yields a return of between \$4 and \$7 in reduced drug-related crime, criminal justice costs, and theft
- When savings related to healthcare are included, total savings can exceed costs by a ratio of 12 to 1²
- Tucson AZ Police Department example³
 - ◆ Cost savings of \$13.40 in personnel costs per incident for deflection compared to arrest.
 - ◆ Projected jail and justice system expense savings for the project exceeded \$640k.
 - ◆ Less personnel time was used per deflection.
 - ◆ Deflection was more effective than arrest in reducing frequency of illegal drug use.
- A systematic review of deflection/diversion initiatives showed that these programs are effective in preventing future offending and contact with the criminal justice system ⁴



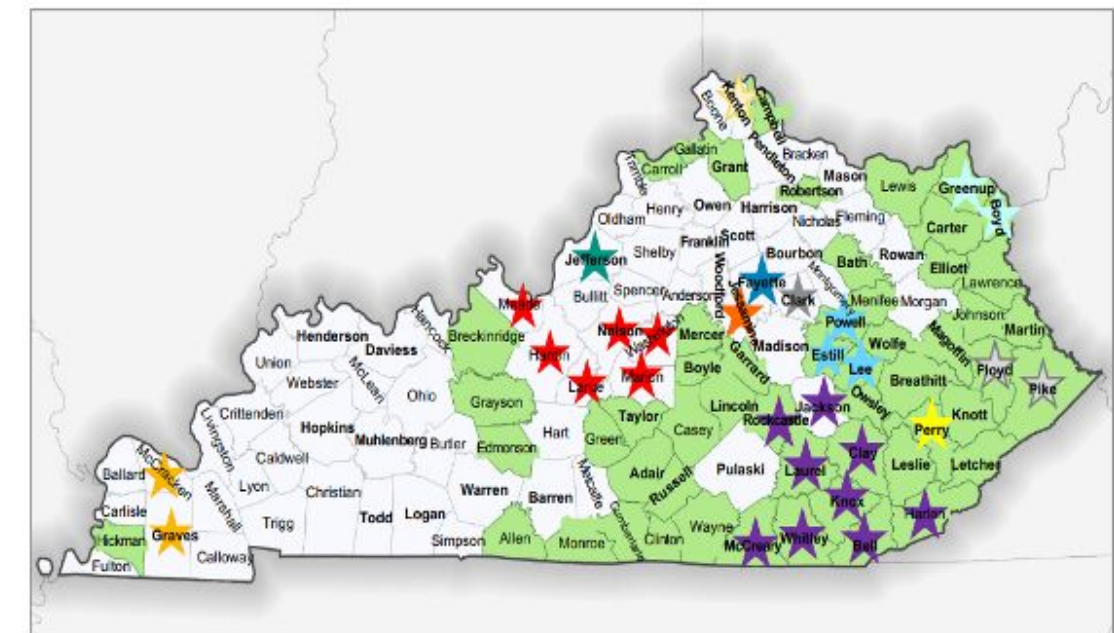
Program Highlight: KY Quick Response Teams & Situation Tables

- Adopted after the Colerain Township, OH QRT and Hub Situation Tables from Saskatchewan
- 6 Situation Tables in KY; 11 QRT teams
- The Situation Table is a rapid triage model, a risk-based approach rather than traditional, incident-driven models that bring multiple human service providers together to triage situations of individuals or families at acutely elevated risk levels.
- Opioid abatement funds have been approved to expand Situation Tables & QRT in KY

QUICK RESPONSE TEAMS

assertive outreach to overdose survivors

- Home or on-site visits within 24-72 hours of overdose or opioid-related complication
- Treatment linkage and harm reduction services
- Follow-up phone calls
- Community engagement



54 Vulnerable Counties

12 KORE-funded QRTs

KORE KENTUCKY OPIOID RESPONSE EFFORT

24

**OPERATION
2SAVE LIVES**
A Lifeline for Recovery

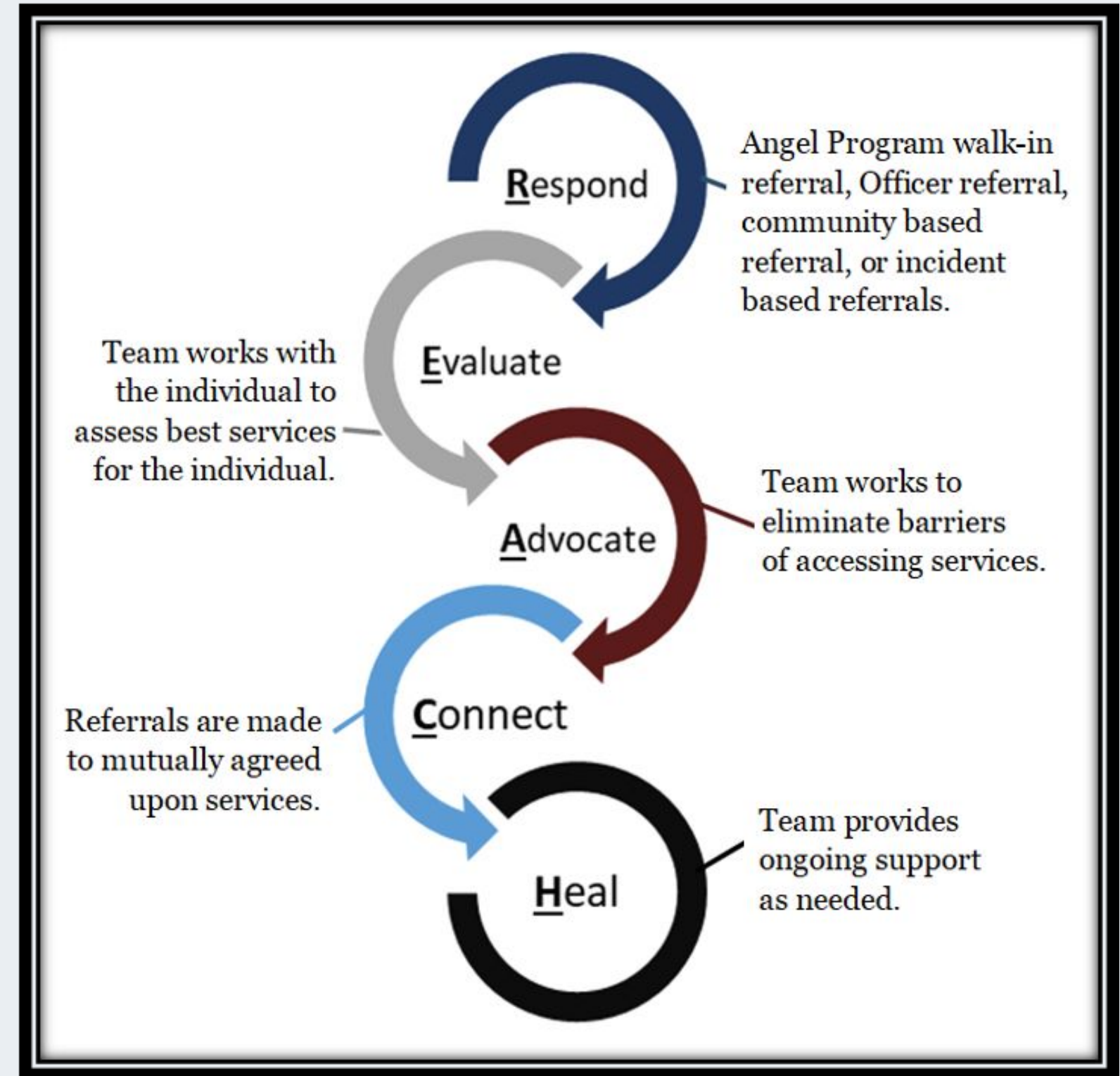
A PROGRAM OF
**COMMUNITY
SERVICES
SOLUTIONS**
a Division of HSSI

QRT
NATIONAL



Program Highlight: Jeffersontown KY REACH Program

- Started with the Jeffersontown Angel Initiative in 2016
- Now, Community Resource Unit embedded in the police department
- 24/7 on call response, follow up services provided within 72 hours
- Multiple pathways to services, have reached more than 2800 individuals and families
- Cost savings and impact on community
- Opioid abatement funds have been approved to expand Situation Tables



HOW CAN PAARI HELP?

Free Membership

Free webinars, materials & state convenings

Inclusion on national discussions that need the voice of police and public safety

Press releases and advocacy

Technical assistance, connection to training resources, & roll call videos

Opioid settlement funds guidance

PAARI National Recovery Corps members

Discount on PAARI National Summit

Connect with hundreds of police and public safety partners in the field

Brittney Garrett
Senior Director,
Public Safety Engagement
& Strategy
brittney@paariususa.org



References

¹Westervelt, E. (2020, September 18). *Mental health and police violence: How crisis intervention teams are failing*. NPR. <https://www.npr.org/2020/09/18/913229469/mental-health-and-police-violence-how-crisis-intervention-teams-are-failing>

²Xuan Z, Yan S, Formica SW, et al. Association of Implementation of Postoverdose Outreach Programs With Subsequent Opioid Overdose Deaths Among Massachusetts Municipalities. *JAMA Psychiatry*. doi:10.1001/jamapsychiatry.2023.0109

³Bronson, J., Stroop, J. , Zimmer, S., & Berzofsky, M., 2020; NIDA, 2020

⁴Korchmaros, J. D., Bentele, K. G., Granillo, B., & McCollister, K. (2022). Costs, Cost Savings, and Effectiveness of a Police-led Pre-arrest Deflection Program. Tucson, AZ: University of Arizona, Southwest Institute for Research on Women.

⁵Blais, E., Brisson, J., Gagon, F., & Lemay, S-A. (2022). Diverting people who use drugs from the criminal justice system: A systematic review of police-based diversion measures. *International Journal of Drug Policy*, 105. <https://doi.org/10.1016/j.drugpo.2022.103697>

