

2019 KACo Poll Results

Survey of Elected County Officials

During the 2019 KACo Annual Conference, county elected officials in attendance were asked to answer a series of policy-focused questions.*

HIGHLIGHTS

A majority of county officials voting support...

106

Counties represented

38%

serving in first term



Gas tax increase



Lower the income tax, raise the sales tax



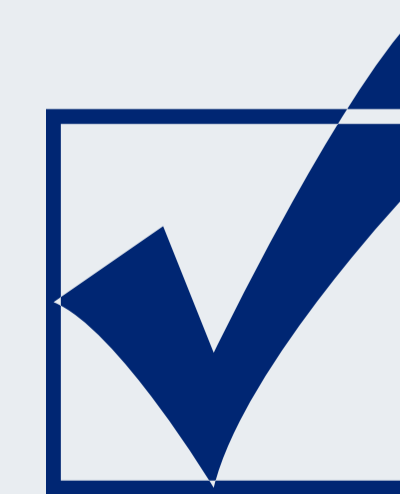
Preserving pension benefits



Local sales tax option



Ability to control special taxing district rates



Medicinal marijuana legalization

*Percentages may add up to more than 100% due to rounding.

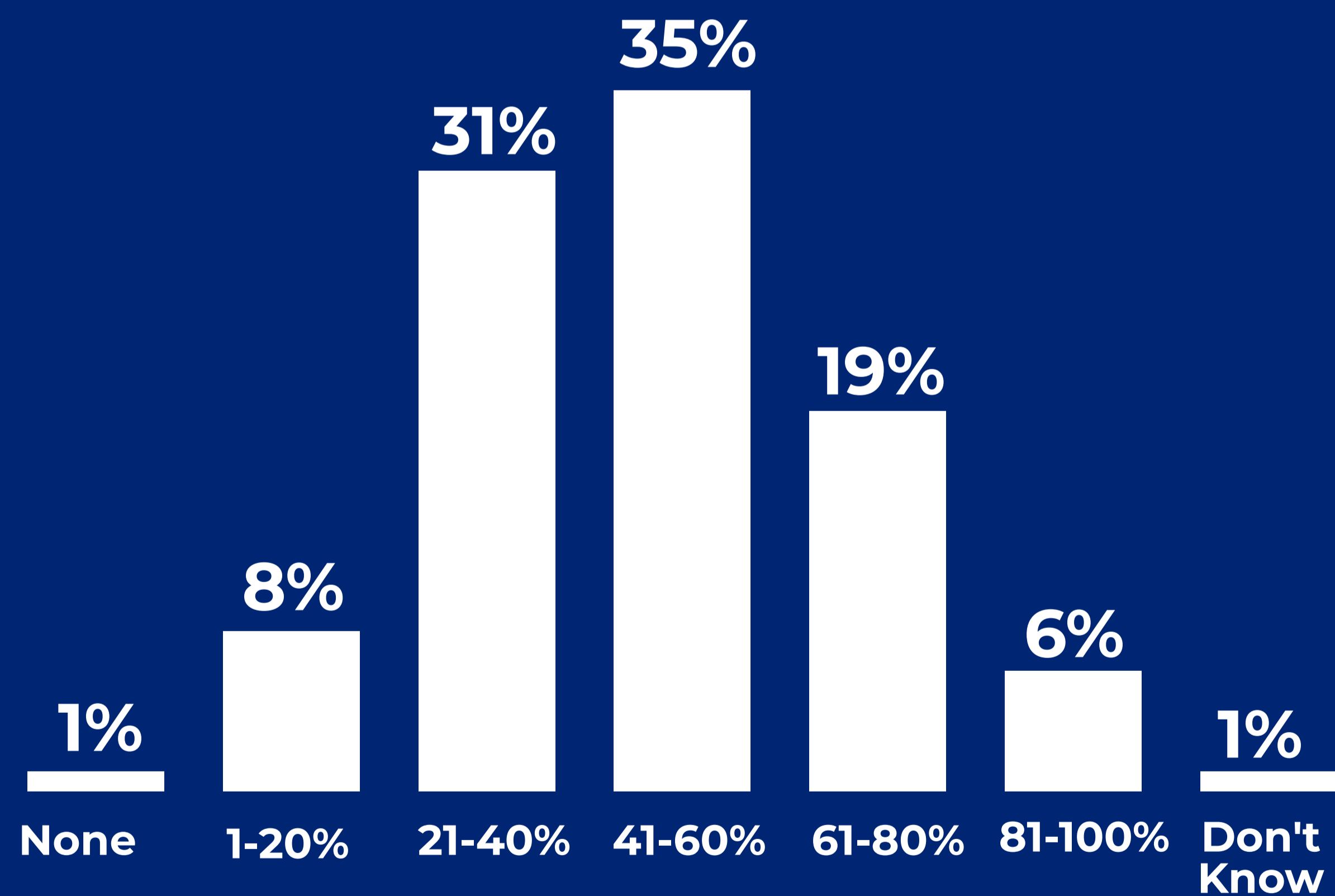


Roads

Q: Estimate the percentage of county roads in need of moderate to significant repair in your county.

A majority indicated that more than 40 percent of county roads are in need of repair and one-quarter of voters said that more than 60 percent of their roads need repair.

Percentage of Roads in Need

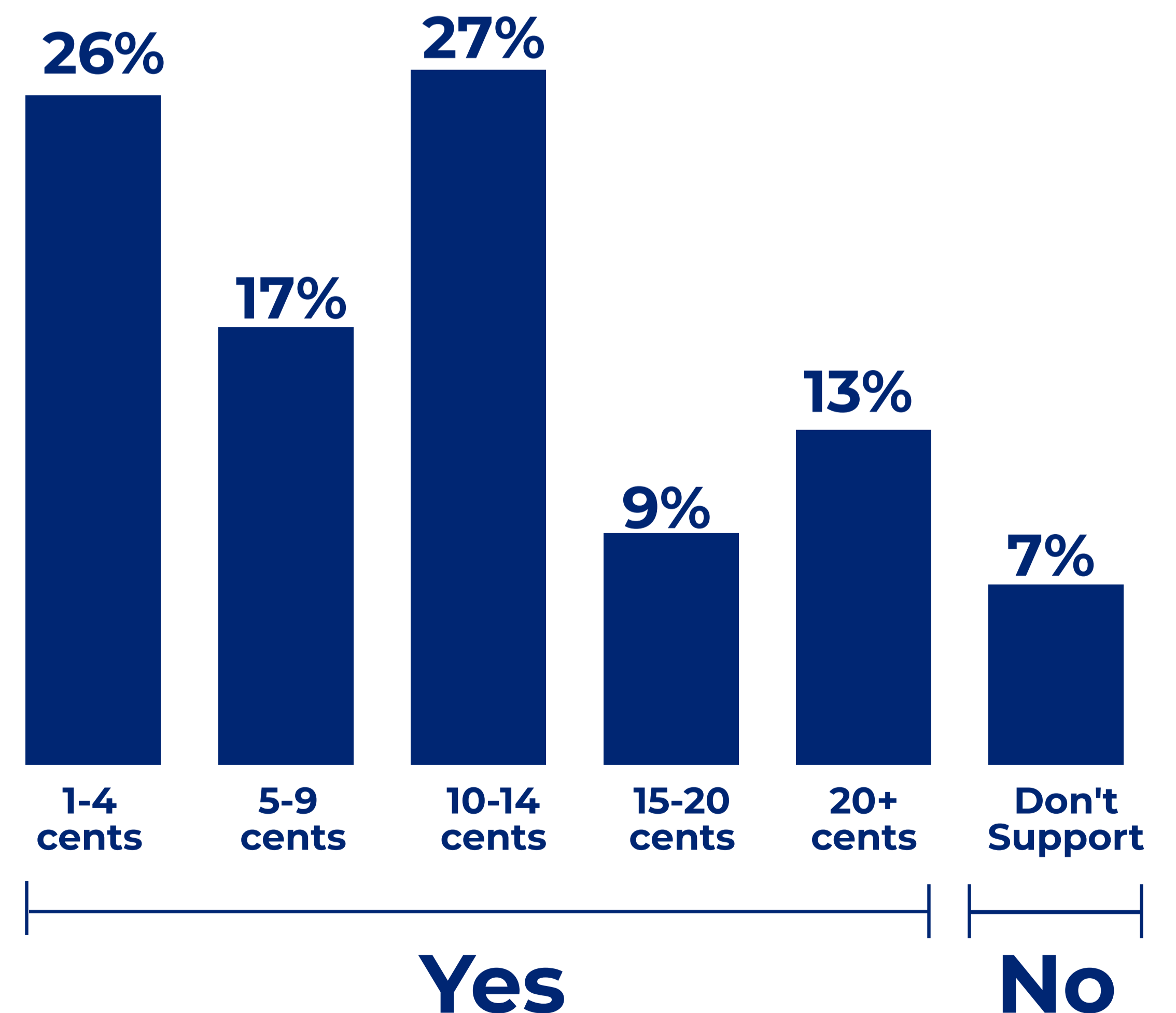


Gas Tax

Q: Do you support raising the gas tax to increase funding for local roads and bridges?

An overwhelming majority – 93 percent – support a gas tax increase with nearly half supporting at least a 10-cent increase in the gas tax.

Gas Tax Increase



*Percentages may add up to more than 100% due to rounding.

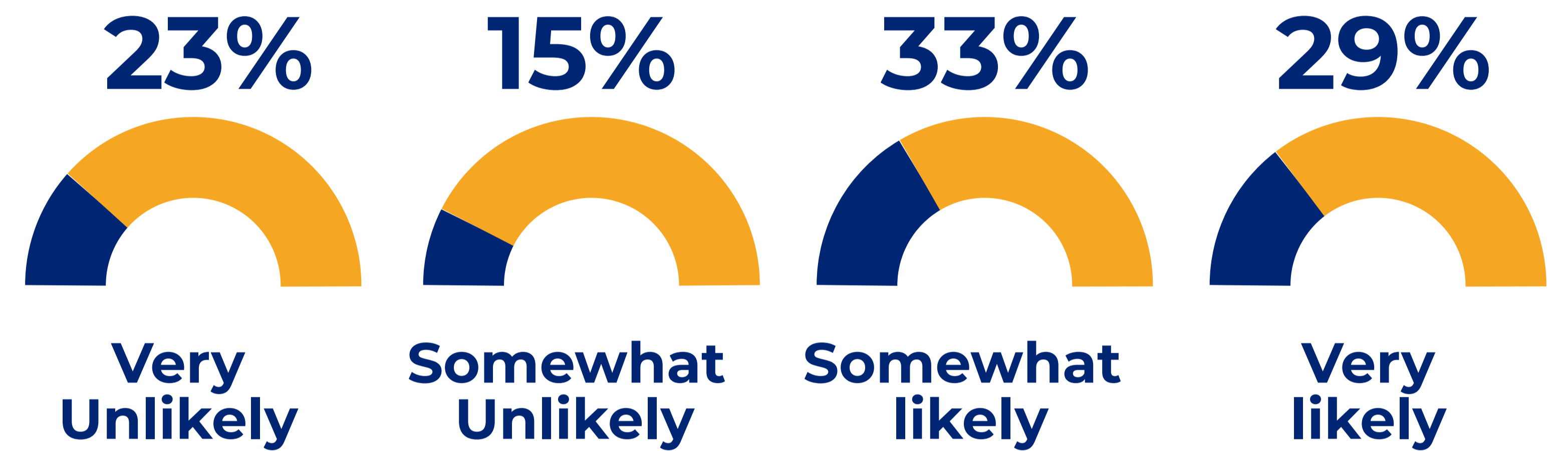


Local Sales Tax

Q: If made available as an option, would you vote to levy a local sales tax of up to 1 percent in your county if there were no restrictions on the use of that revenue?

62 percent said they would be somewhat or very likely to levy a local sales tax in their county while 38 percent indicated they were somewhat or very unlikely to support such a tax.

Local Sales Tax

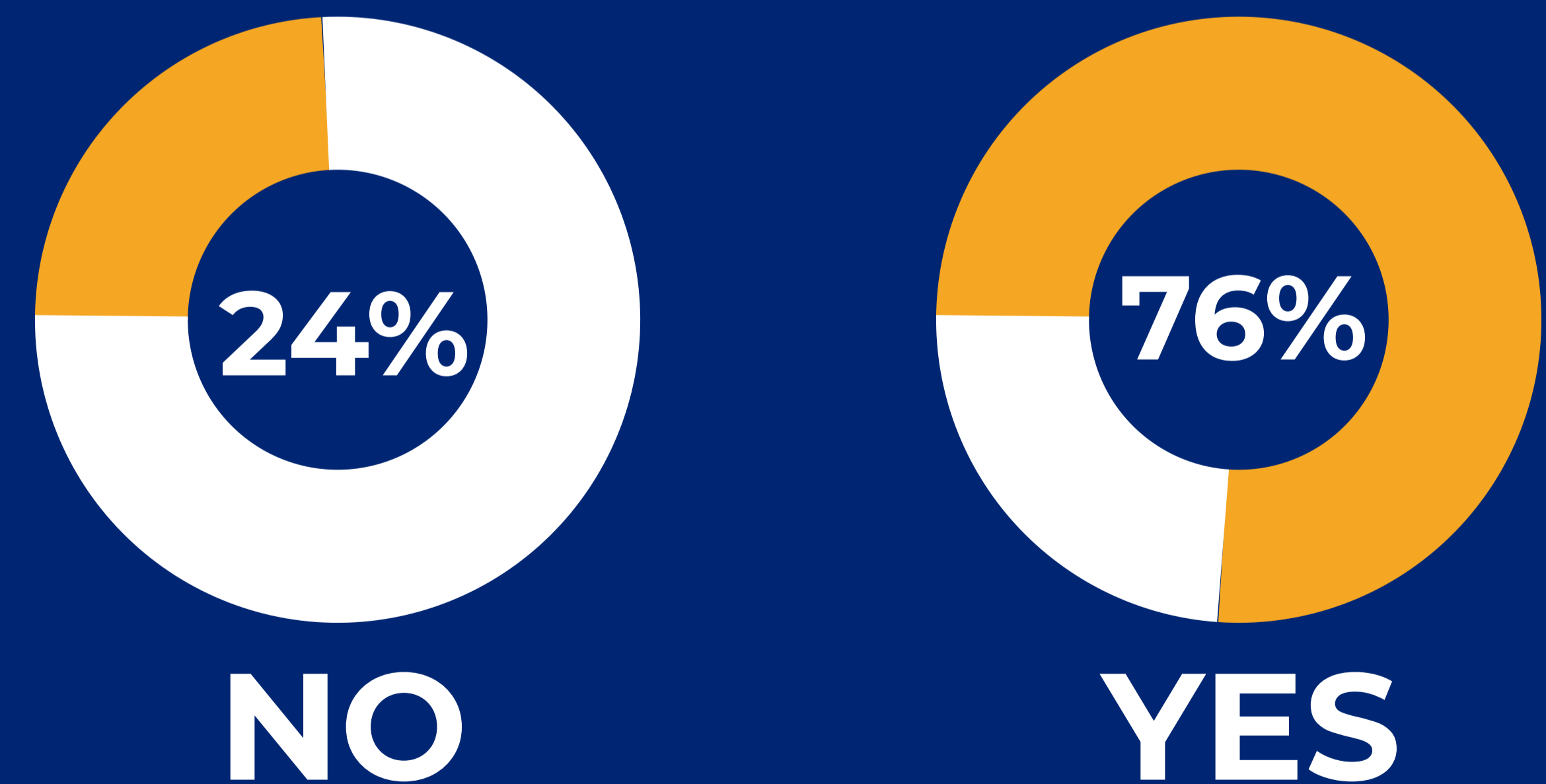


Special Taxing Districts

Q: Would you like your fiscal court to have the ability to approve special district tax rates (e.g. libraries, extension, health, etc.)?

A strong majority – 76 percent – indicated that they would like the ability to approve special district tax rates.

Special Taxing District Control



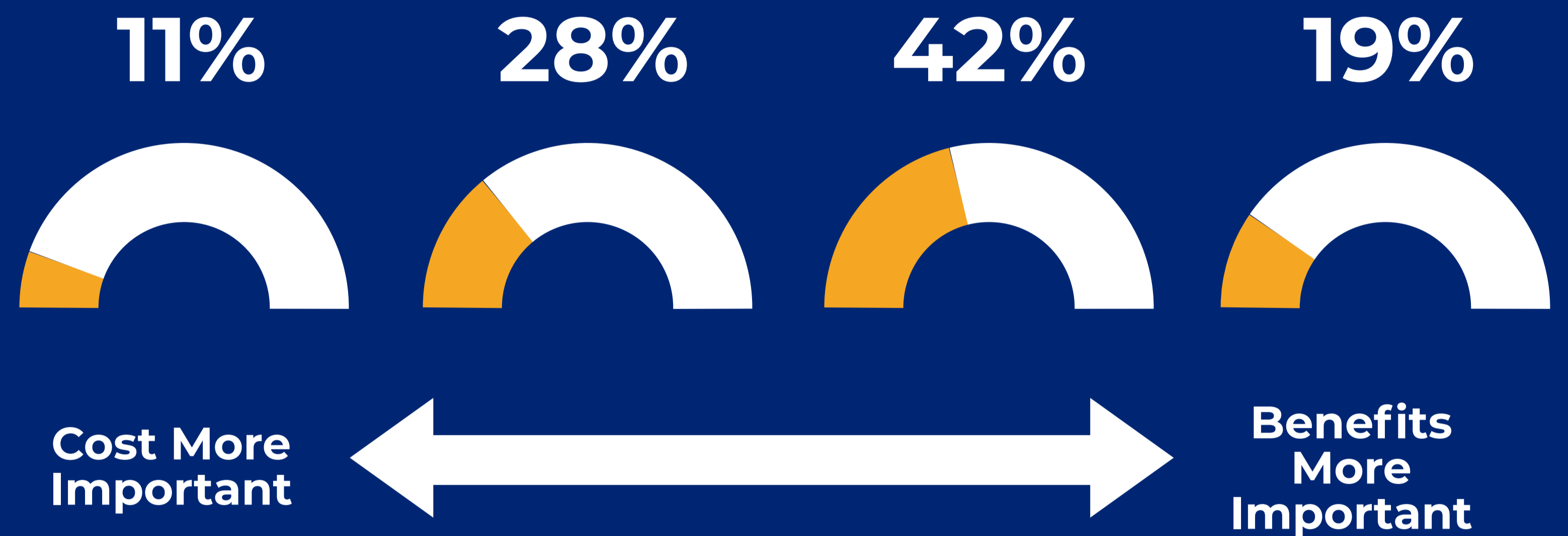
*Percentages may add up to more than 100% due to rounding.

Pensions

Q: When it comes to public pensions, which is more important to you – preserving the level of benefits for employees or how much those benefits cost the county to maintain (i.e. contribution rates)?

A majority – 61 percent – indicated that preserving employee benefit levels is somewhat or far more important than cost when it comes to public pensions.

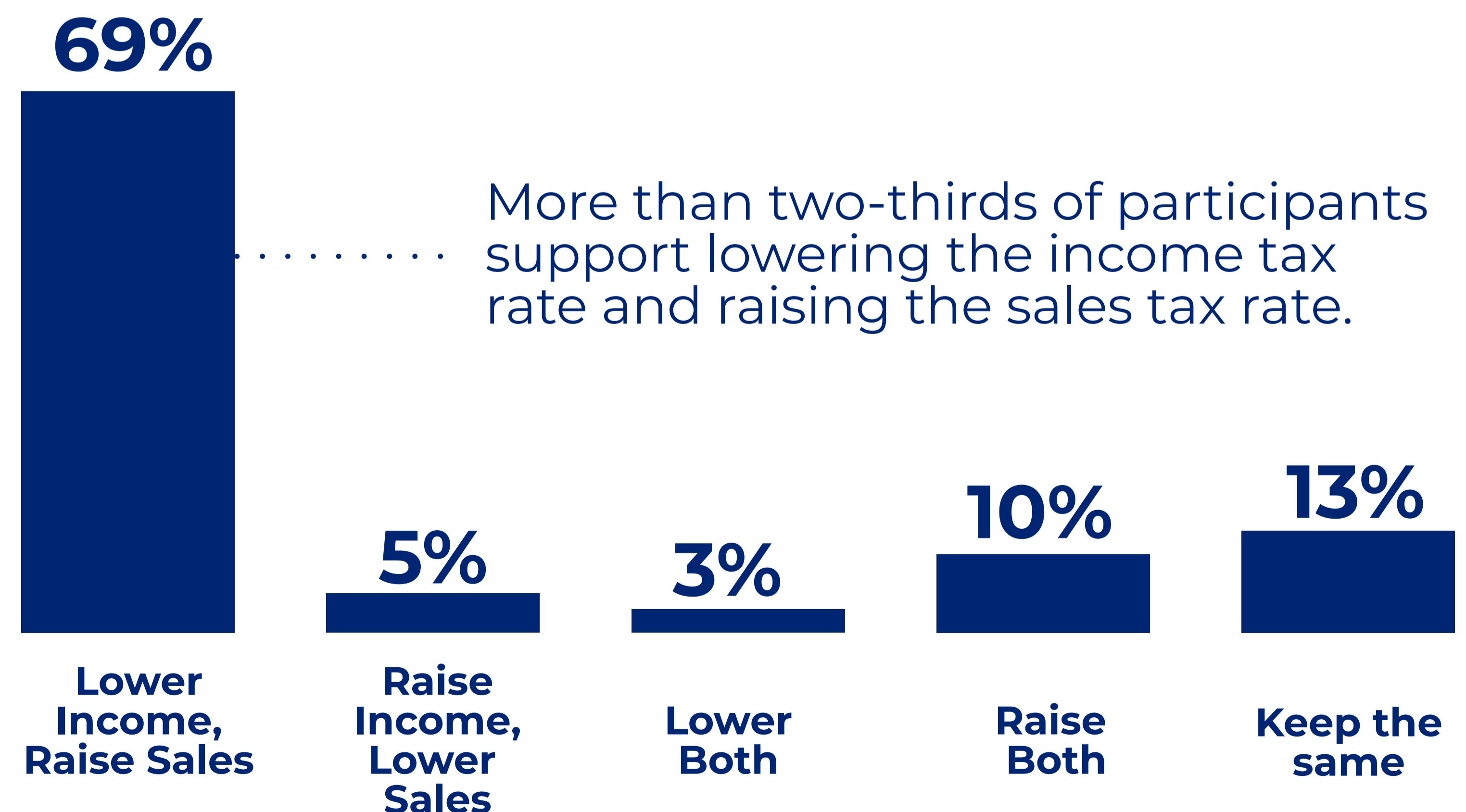
Pension Benefits Versus Cost



State Tax Reform

Q: Which of the following changes to state tax rates do you support?

A strong majority – 69 percent – indicated that they support lowering the state income tax rate and raising the sales tax rate among the tax reform options listed.



*Percentages may add up to more than 100% due to rounding.

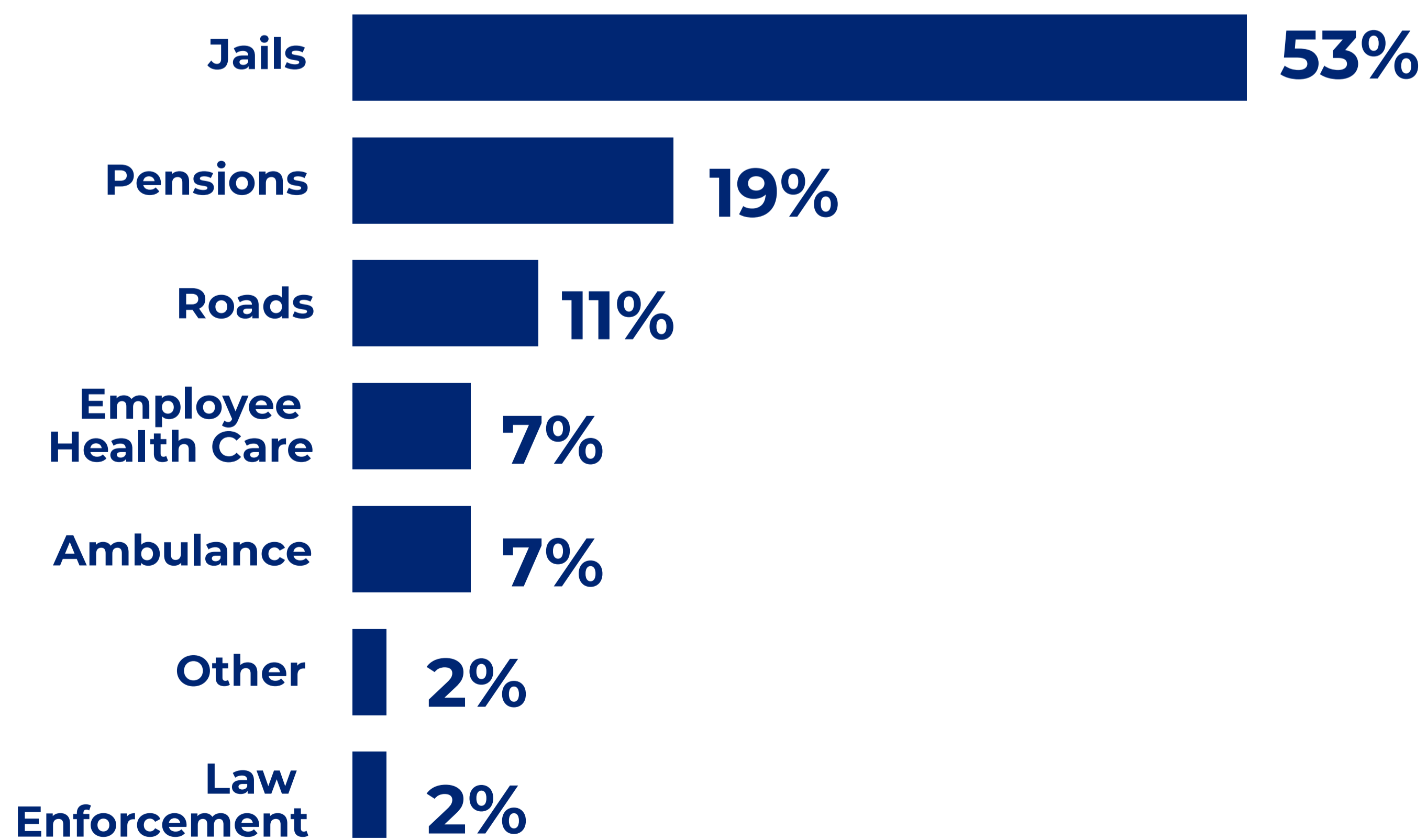


Budgets

Q: Which of the following is putting the most pressure on your county's budget?

A majority indicated that jail costs are the biggest pressure on county budgets – 53 percent – followed by employee pensions (19 percent), road maintenance (11 percent), employee health care (7 percent), ambulance service (7 percent), other (2 percent) and law enforcement (2 percent).

Budget Pressures

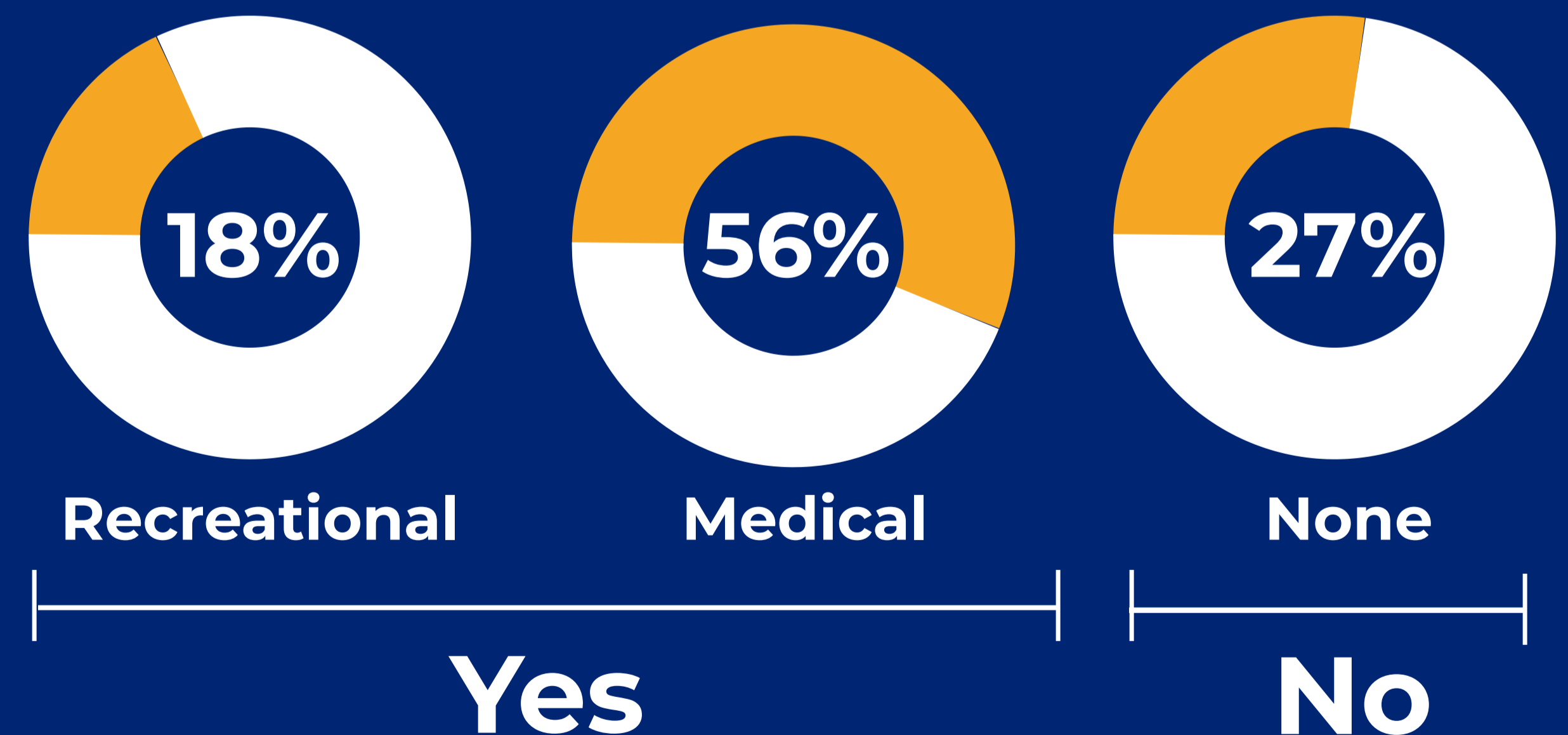


Marijuana

Q: What level of legalization of marijuana would you support?

A significant majority – 73 percent – supported some form of legalization of marijuana with more than half (56 percent) supporting legalization of medicinal marijuana only.

Marijuana Legalization



*Percentages may add up to more than 100% due to rounding.

